





# ENCHANTED EDIBLES

Alayna Nieman

Alexis Ressler

# What is Edible Landscaping?

- Alternative to ornamental plants
- Produces a variety of healthy produce
- Food can be grown naturally
- Significance to Western

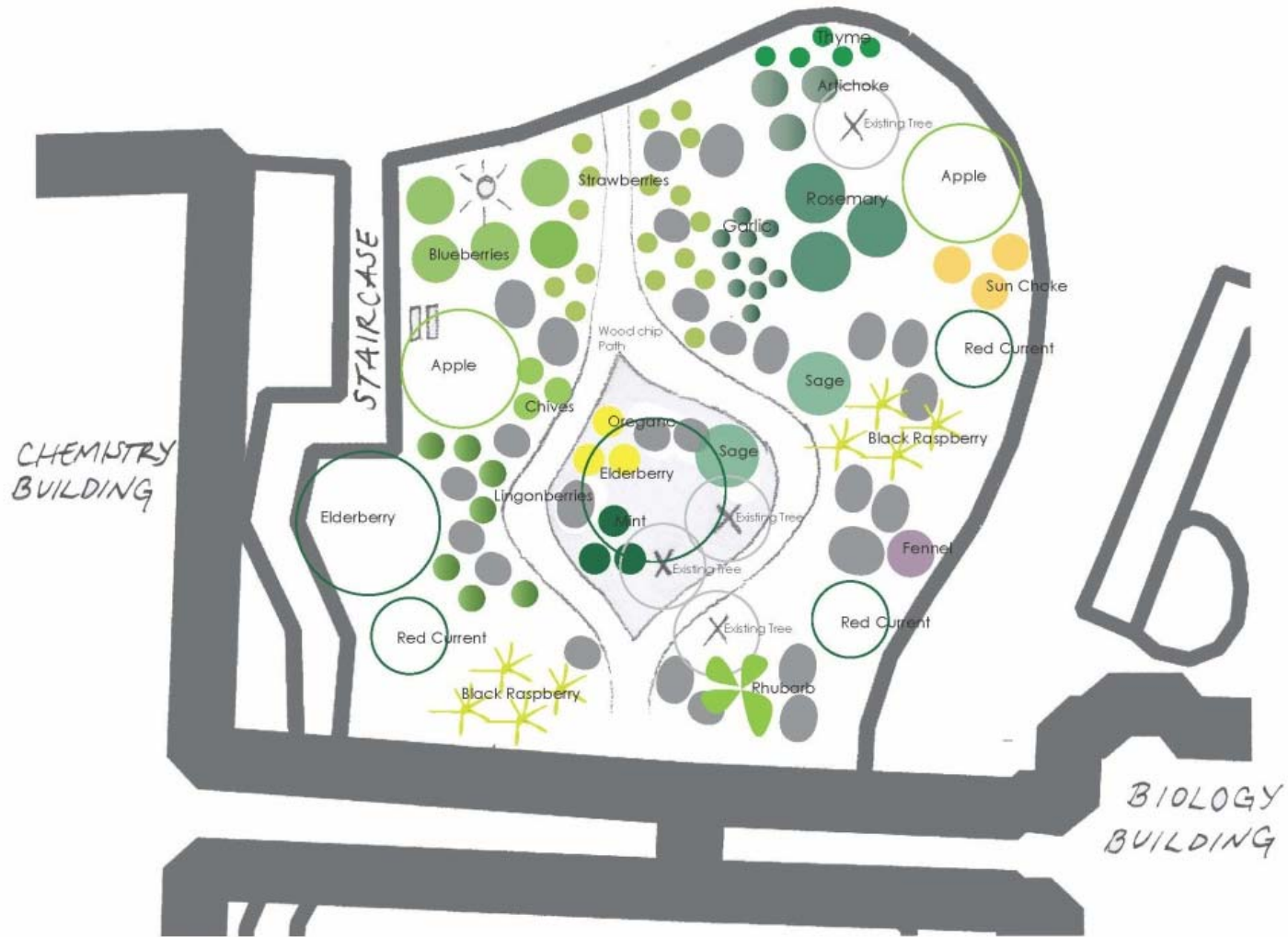


# What Will This Look Like?

- Randy Godfrey and other gardeners
  - Site selection, maintenance concerns, and plant options
- Paul Mueller – WWU Environmental Health and Safety
  - Clearly defined area, placard with liability, indication of species
- Janelle Gavin – landscape designer



# Western Food Forest



NOT TO SCALE

CONTRACTOR TO CHECK ALL MEASUREMENTS

# How Will This Work?

- Available for all!
- Low-maintenance, drought-tolerant perennials
- Each species will have a small placard with a photo and description
- Initial volunteer planting event



ENVS 110	Ecogastronomy: Art and Science of Food	Gigi Berardi
ENVS 381	Intro to Education for the Environment and Sustainability	Gene Myers
ENVS 410	Agroecology and Sustainable Agriculture	Gigi Berardi
ENVS 483	Environmental Interpretation	Staff
ESTU 571	Environmental Education Foundations	John Miles
FAIR 231N	Intro to Applied Human Ecology: Sustainable Systems	Gary Bornzin
FAIR 330E	Ethnobotany	John Tuxill
FAIR 336B	Topics in Social Issues: Population, Health, Environment	Staff

- AS Outback
- LEAD (Learning, Environment, Action, Discovery)
- Students for Sustainable Food Club



# Loyola University Chicago



# McGill University



# Who Will Maintain the Space?

- Club
- Course(s)
- Outback
  - Unpaid internship position
  - Coordinate between gardeners, Outback, and volunteers
  - Student interest in the project
- Outback concerns
- Looking to the future



