

# Northwest Indian College Landscaping Plan



Marc Van Grinsven, Kelly Ess, and Noe Penney  
ESTU 471 – Campus Planning Studio, Fall 2009

# Outline of Presentation

- Current landscaping practices at NWIC
- Future campus construction plans
- Introduction to sustainable landscaping
- Case Study: College of Menominee Nation
- NWIC student work so far

# An Overview



Northwest Indian College Landscaping Plan: A Collaboration  
between members of NWIC and WWU

2007-2008: 1014 students enrolled

Full-Time-Equivalent of 207 students using the campus

# Current & Future Landscaping

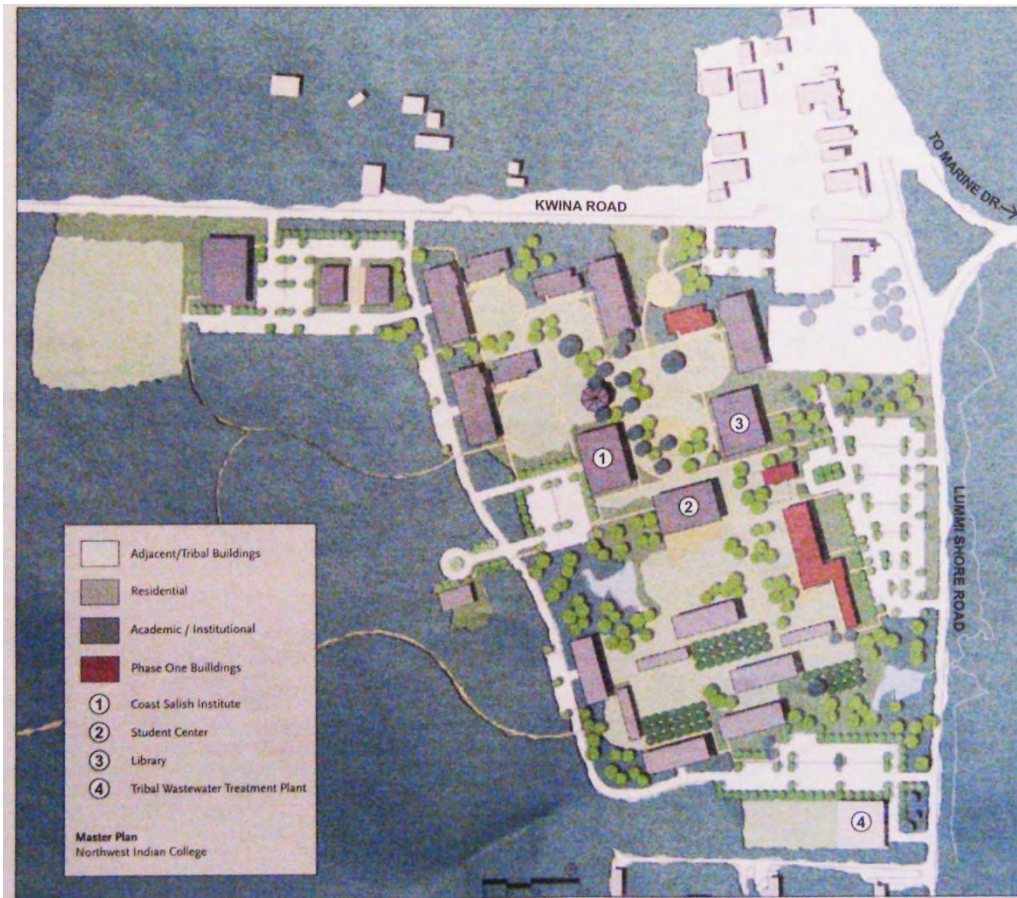


Figure 14. Master Plan Solution

- Currently consists mainly of grass, though there are a few small gardens
- More construction planned for future

# Current & Future Landscaping



# Current & Future Landscaping



Goal is to incorporate more sustainable landscaping  
with current and future buildings

# Traditional Landscaping vs. Sustainable Landscaping



# Introduction to Sustainable Landscaping

Harnesses aesthetic, economic and environmental benefits:

raingardens, pesticide-free, limited fertilizer, less irrigation





# Case Study: College of Menominee Nation

Student population very similar to NWIC

One of the first colleges anywhere to have sustainability issues forefront

Featured in AASHE (Association for the Advancement of Sustainability in Higher Education)



# College of Menomonee Nation Sustainability Practices



Sustainable Development Institute

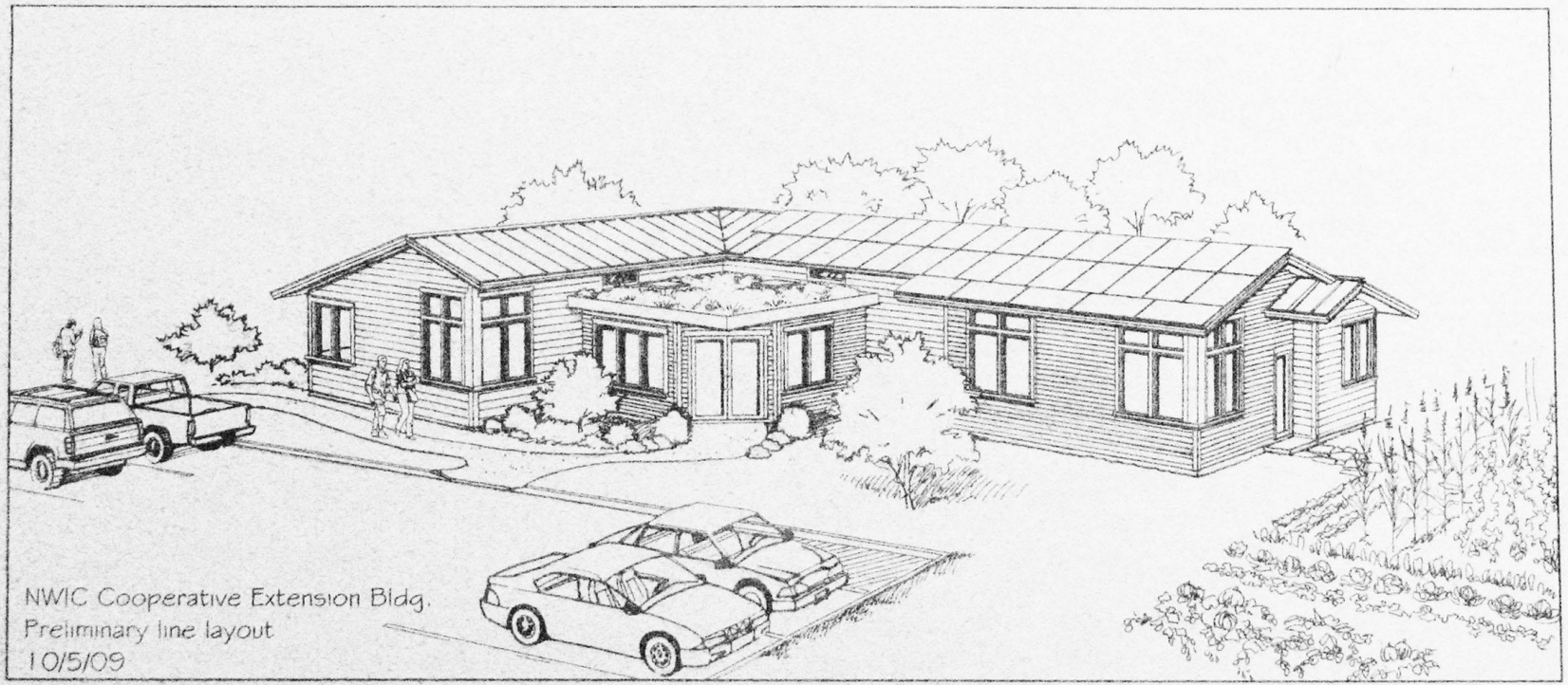
New LEED Certified Library



Landscape Retention

Student / Community Programs

# Future Directions



NWIC's Native Environmental Science Seminar