



# Multi-Family Recycling In Skagit County

Emily Berend and Jacob Gerstner





# Recycling in Skagit County

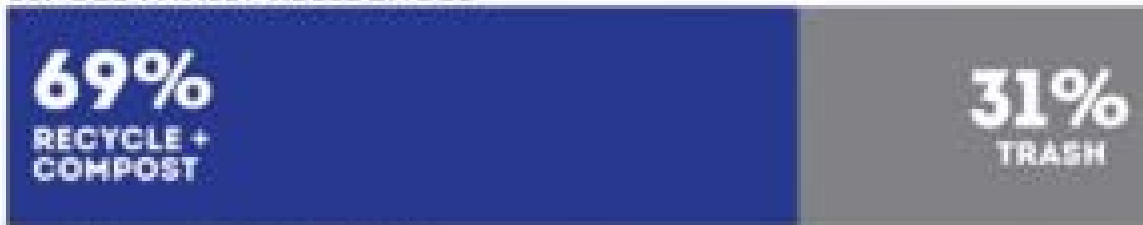
- Focus on Multi-Family residences
- Education and Outreach



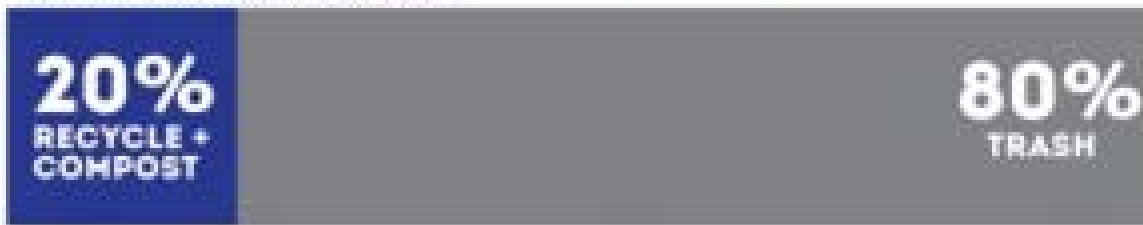


# Why does this matter?

## SINGLE-FAMILY RESIDENCES



## MULTIFAMILY RESIDENCES



*Data from Kirkland Conserves*

---

# Case Studies: Kirkland Heights

- Kirkland Heights- 180 unit
- Issues:
- Lack of outreach
- Poor signage
- Infrastructure



---

# Solutions for Kirkland Heights

- Added recycling infrastructure
- Improved signage
- Reduced their garbage bill by **\$1600/month!**



---

## Case Studies: Cambridge Place

- Cambridge Place/Juanita Village: 130 units
- Issues
- Lack of knowledge
- Lack of bins



---

# Solutions for Cambridge Place

- Residents received recycling starter kits
- Saving **\$800 a month!**
- Increased demand for bins



# Solutions For Skagit County

- Pilot Program
- Recycling bins in individual homes
- Get people involved



RECICLAJE MIXTO		
PAPEL	PLASTICO	METAL
Papel • Cartón • Corchón	Botellas • Contenedores Plásticos	Aluminio • Estallo • Acero
<b>NO</b> 	<b>NO</b> 	<b>NO</b> 
VIDRIO Recicle el vidrio en un recipiente <i>separado</i> .		

Para Más Información: (800) 355-0534 • [info@movemoreto recycling.com](mailto:info@movemoreto recycling.com) • [www.Movemoreto recycling.com](http://www.Movemoreto recycling.com)



# Pilot Program

- Focus groups
- Recycling how-to-guides and individual bins



Recomendaciones para  
Reciclaje para Residencias

(Spanish)

የመኖሪያ ቤት ዕቃዎችን በድጋሚ  
የመጠቀሚያ (ሪሳይክሊንግ)

(Amharic)

居民回收指南

(Chinese)

주택가 재활용품  
처리 지침 (Korean)

Указания по утилизации  
домашних отходов

(Russian)

Tilmaamaha Dib-u-  
wershadaynta Xaafadda

(Somali)

Hướng dẫn tái chế  
tại nhà riêng

(Vietnamese)

---

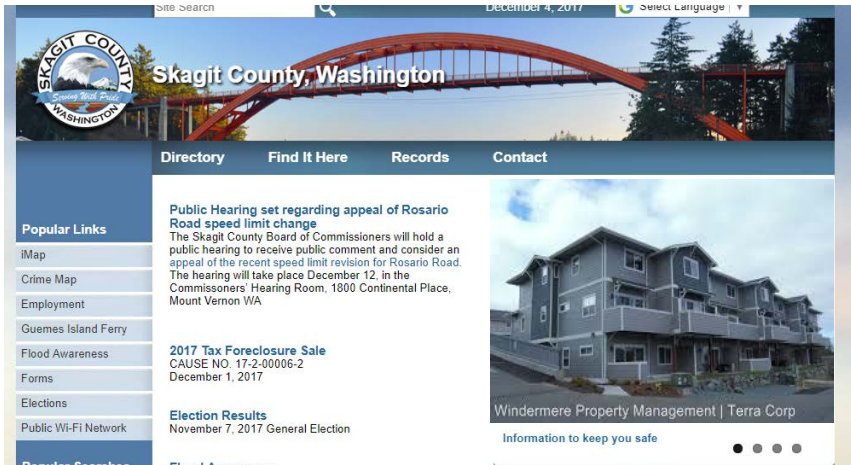
# Recycling Bins in Homes

- Small, easy to carry bins



# Education and Outreach

- Continue excellent outreach through county staff.
- Highlight Success



The screenshot shows the Skagit County, Washington website. The header features the county logo and navigation links: Directory, Find It Here, Records, and Contact. A news article titled "Public Hearing set regarding appeal of Rosario Road speed limit change" is highlighted, with a sub-headline "2017 Tax Foreclosure Sale" and a date of December 1, 2017. A sidebar on the left lists "Popular Links" such as iMap, Crime Map, and Employment. The main content area also includes a section for "Windermere Property Management | Terra Corp" with the tagline "Information to keep you safe".



*Kids play a recycling relay game to test their recycling knowledge.*

# Outreach Material

**Sticker Decals** For indoor or outdoor containers  
7.5" x 7.5"

**How To Recycle**  
Recycling in Basura or NYC: Ask your building manager where to bring recyclables.

**Sticker Decals** 8.5" x 11"

**We Recycle Brochure** 8.5" x 8.5"

**Moving Out Brochure** 5.5" x 8.5"

**Mix Recycling Poster** 17" x 11"

Recycle Hotline: 323-340-4200 • Nakson County Public Works: 323-558-5148 • www.morecycles.net

**WE RECYCLE! • ¡RECICLAMOS!**

## Recycling Program Resources

The signs and stickers below are available for FREE. Please indicate how many you need in the space below.

**We Recycle!** sign or container decal

8.5" x 11" \_\_\_\_\_

11" x 17" \_\_\_\_\_

**Sticker Decals** For indoor or outdoor containers  
7.5" x 7.5"

The goal of the Multifamily Recycling Program is to make recycling easy for you and your residents.

# New resident recycling guide

- Recycle pledge
- How-to guide



**Residential Guide to Single Stream Recycling**

**Aluminum & metal cans**

**#1 - #7 Plastic food & beverage containers (caps removed)**

**Phone books**

**Cartons**

**Corrugated cardboard & Paper bags (flattened)**

**Greeting cards, regular & junk mail**

**Cardboard beverage carriers**

**Paperboard boxes (cereal, pasta & tissue)**

**Newspapers, magazines, brochures & inserts (no plastic bags, do not tie & bundle)**

**NO**

- Scrap metal
- Plastic bags
- Plastic lids & caps
- Plastic 6-pack holders
- Needles or syringes
- Plastic microwave trays
- Window panes, mirrors, ceramics & Pyrex dishware
- Plastics other than those listed
- Paint, pesticides, oil & cleansers
- Stickers or address label sheet waste
- Waxed paper or waxed cardboard
- Styrofoam or paper to-go containers
- Organic material and food waste
- Electronic waste (batteries, cell phones, computers, etc.)

**NO NEED TO REMOVE:**  
Paper clips, stamps, address labels, staples, metal fasteners, cellophane address windows, rubber bands, spiral bindings, plastic tabs

Please flatten all cardboard boxes. Empty and rinse all containers.

Recyclables are to be placed curbside in a container after 9PM on Tuesdays and Thursdays.  
**Recyclables are NOT TO BE PUT IN PLASTIC BAGS.**

**Please follow these guidelines carefully.**

**Questions? Please contact:**  
City of Hoboken  
Dept. of Environmental Services  
P: 201-420-2049  
F: 201-222-3830  
dcalamoneri@hobokennj.org

**Mayor Dawn Zimmer**  
and the Hoboken City Council

**HOBOKEN RECYCLES**

**www.HobokenNJ.org/recycle**

**AIM FOR MAXIMIZED RECYCLING**



**I pledge to...**

- Monitor and maintain our recycling and garbage depots.
- Offer encouragement and guidance to our current residents.
- Introduce our recycling system to new residents.

NAME: \_\_\_\_\_

SIGN: \_\_\_\_\_

DATE: \_\_\_\_\_



Marion County can assist your residential community's recycling and waste reduction efforts. Contact us today to learn how reducing waste can help your environment, your residents, and your budget.

**503.588.5169**  
[www.mcrecycles.net](http://www.mcrecycles.net)



**Marion County Public Works  
 Environmental Services**



---

# Budget

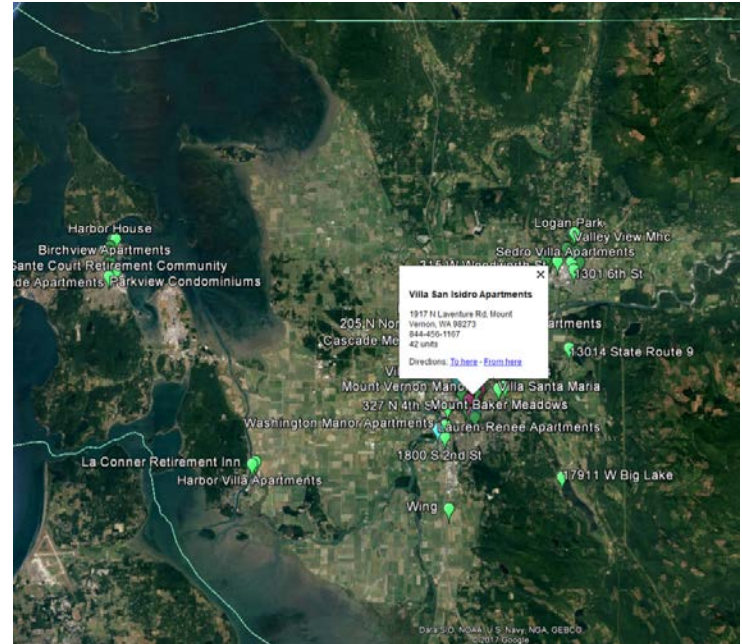
- \$2000-\$5000
- Bins, picnics, games
- Staff hours



---

# Monitoring and Evaluation

- “Living Map”
- Check-ins







# Conclusion



The goal of the Multifamily Recycling Program is to increase the participation of recycling at your residential community. We do this by making recycling easy for you and your residents.





# Sources

- <http://www.co.marion.or.us/PW/ES/disposal/programs/recycling/multifamily/Pages/startrecycleprogram.aspx>
- <http://cityofkirklandblogs.com/environmentalservices/2015/11/multifamily-recycling-case-studies/>
- <https://usm.maine.edu/sustainability/recycling>
- <https://clarkgreenneighbors.org/recycling-done-right/multi-family-residence-recycling>
- <http://icleiusa.org/clearpath-interview-series-kirkland-wa/>
- <http://ameriplexrealtors.com/community-outreach/>
- <https://www.salesforce.com/products/marketing-cloud/best-practices/social-media-monitoring/>
- <http://www.redfishrecycling.com/redfish-recycling-save-money/>
- <http://cityofkirklandblogs.com/environmentalservices/2017/04/home-recycling-inventory/>
- <http://recycleright.wa.gov.au/>
- <http://cityofkirklandblogs.com/environmentalservices/2015/11/multifamily-recycling-case-studies>
- <http://sustainabilityww.com/single-stream-recycling/>
- <http://kingcounty.gov/depts/dnrp/solid-waste/garbage-recycling/compost-more/waste-less-pledge.aspx>