



# Seeing Green

An Environmental Mapping Endeavor at WWU





# Sus·tain·a·bil·i·ty

Sustainability is meeting the needs of all humans, being able to do so on a finite planet for generations to come while ensuring some degree of openness and flexibility to adapt to changing circumstances.

-Jerry Sturmer, Santa Barbara South Coast Community Indicators

[SustainableMeasures.com](http://SustainableMeasures.com)



# Statement of Need

- The Western Office of Sustainability has expressed the need for an updated map which promotes green features throughout the University in a concise and clear format.
- The current green map is both lacking in information and in a harder to find location.

# Summary

We propose to contribute campus sustainability locations, landmarks and information to the main WWU map in order to increase the awareness of our university's environmental efforts.







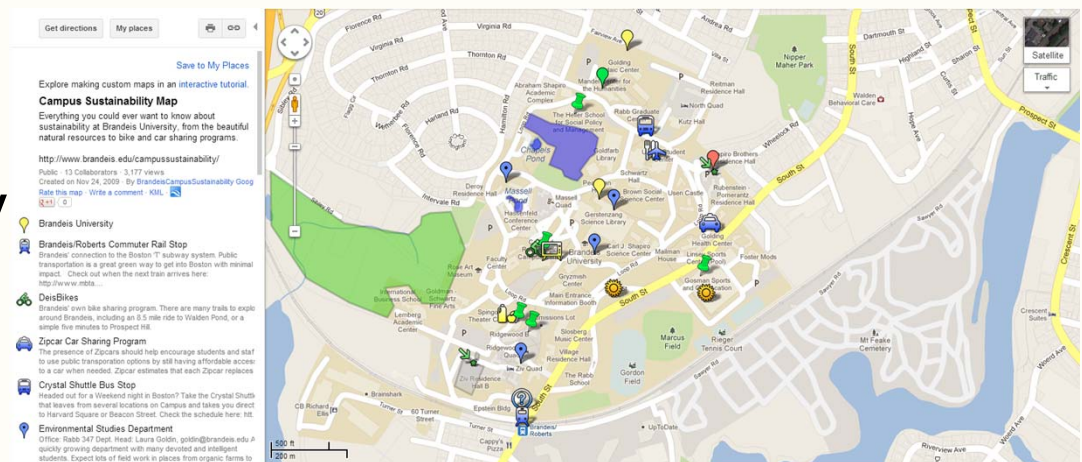
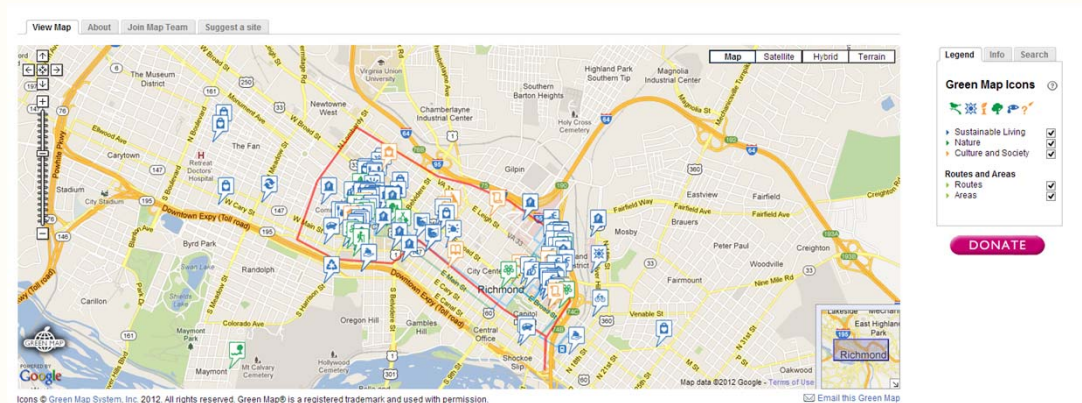
# Project Description

- Organize information regarding environmental initiatives, offices, features and events into a concise, understandable and accessible map.
  - Emphasise school's environmental focus
  - Assist campus tour guides, new students and prospective students



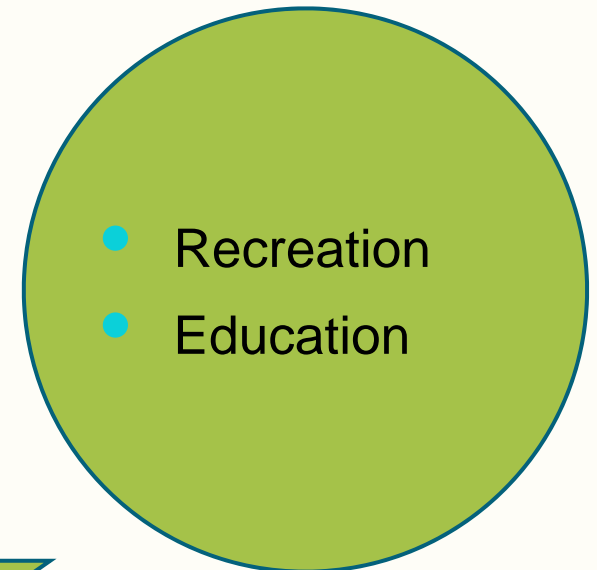
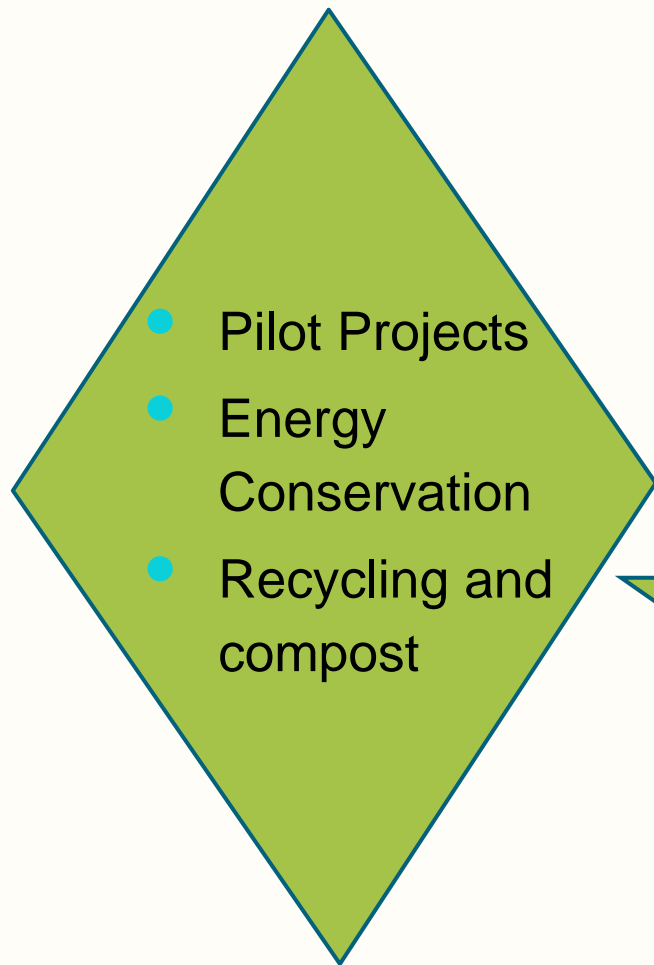
# Case Studies

- Virginia Commonwealth University
- Appalachian State University
- Brandeis University



# Project Description

## Map Icons





# Draft Map



# Future Works

- More detailed icons
- Expansion
  - New sustainable projects
  - Locations beyond campus
- Campus Outreach
  - Promotional Materials
    - Posters
    - Plaques
    - QR Codes



# Conclusion



- Our project will help improve the capacity and ability to locate, identify and learn about the environmental and sustainability efforts on campus.
- Serve as a useful tool for students, faculty, new and prospective students.