

# Western's Relationship With Local Food

Cailen McDevitt,  
Connor Mack,  
Jonathan Cooper



# Outline

- Methodology
- Importance of Local Food/Significance to WWU
- What is a Farmer's Market?
- Case Studies
- Survey Data
- CSA box/How it Benefits WWU
- Future Works
- Conclusion

# Methodology

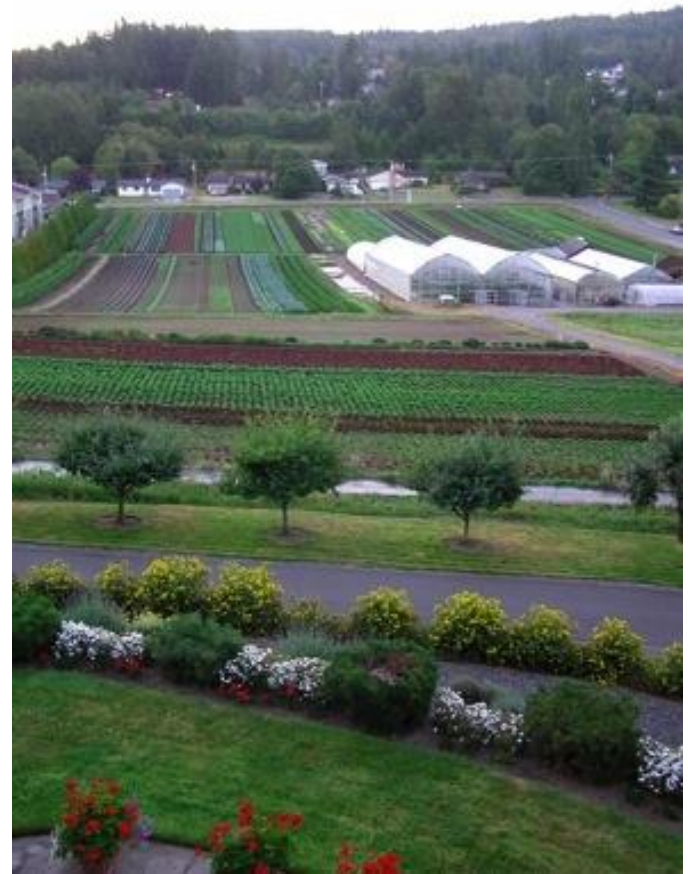
- Farmers Market
- Meetings
- Research
- Surveys
- CSA pilot program



<http://www.erikhenne.com/temp.htm>

# Importance of Local Food

- Nutrition
- Local economy
- Seasonal
- Distance
- Seed to plate
- Small, local farms  
vs Large, factory farms



<http://www.joesgardens.com/Welcome.html>



# Significance to Western





# What is a Farmers Market

- Local goods
- Fresh produce
- Community connection



# Case Study: UC Davis



<http://sustainability.ucdavis.edu/topics/food/news.html>

- Started in 2007
- Awareness and Education
- Smaller satellite market
- More nutritional food options for student population



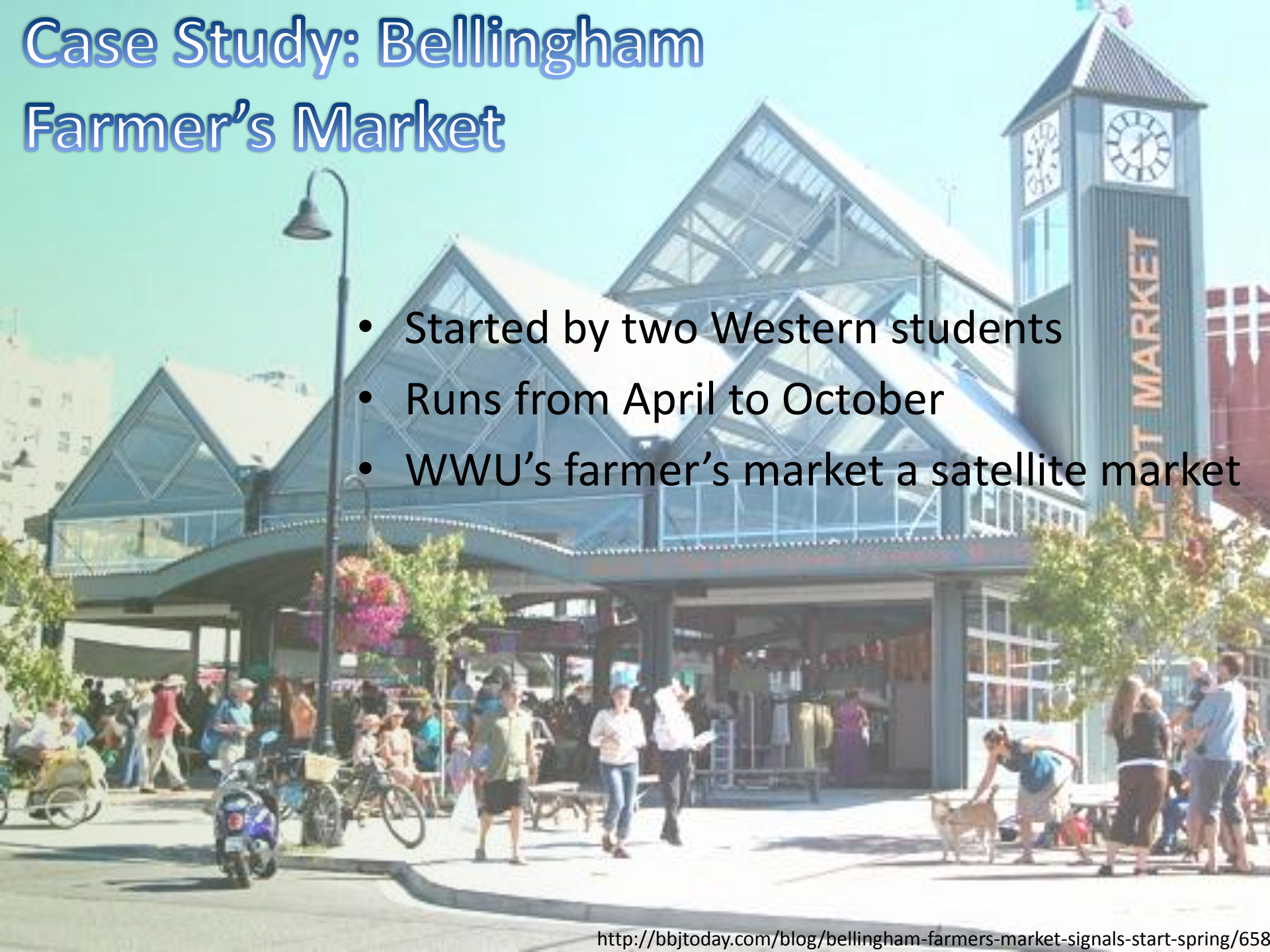
# San Francisco State





# Case Study: Bellingham Farmer's Market

- Started by two Western students
- Runs from April to October
- WWU's farmer's market a satellite market



# Survey Data

With the help of...

Gene Myers

Mardi Solomon

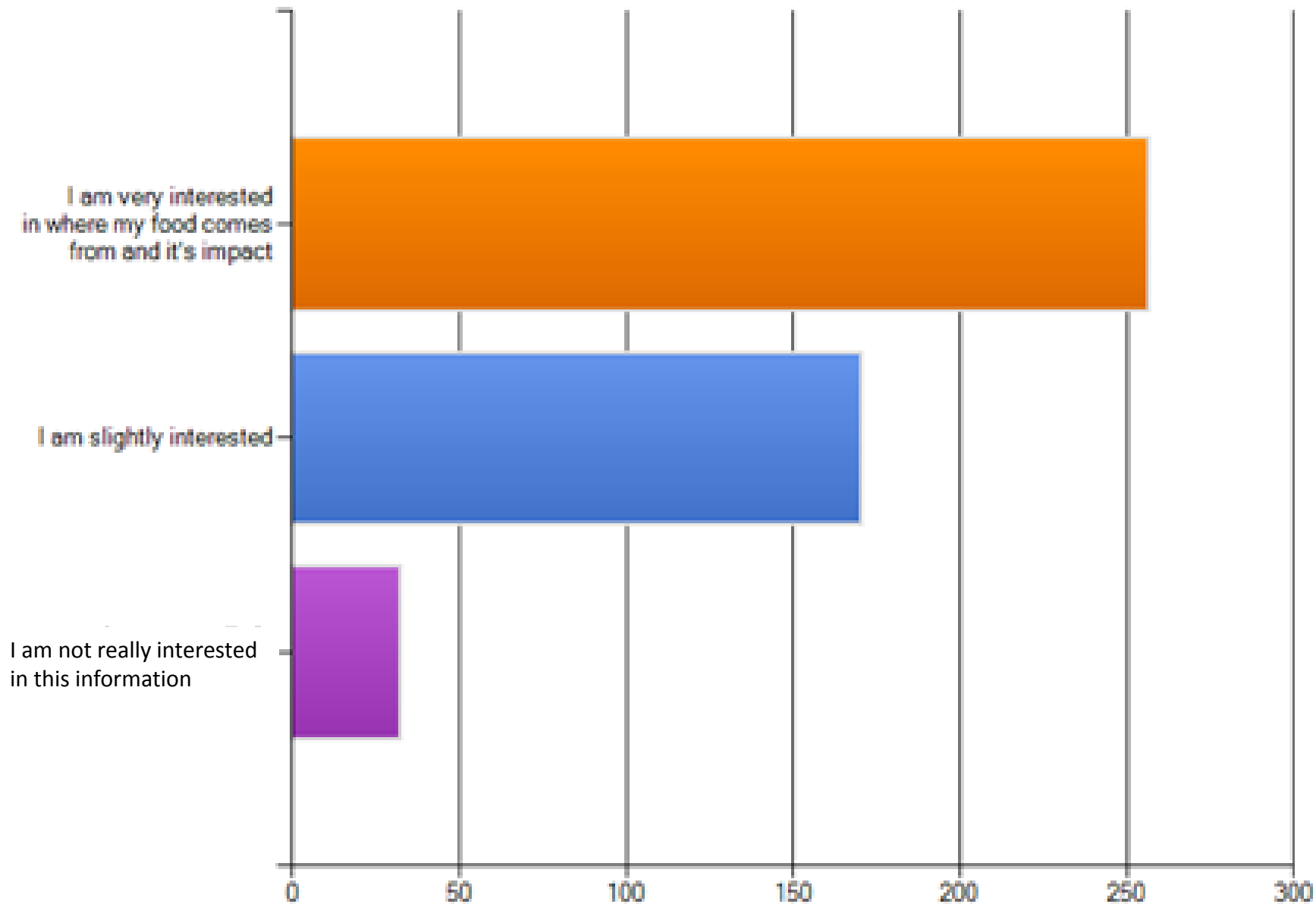
Seth Vidana



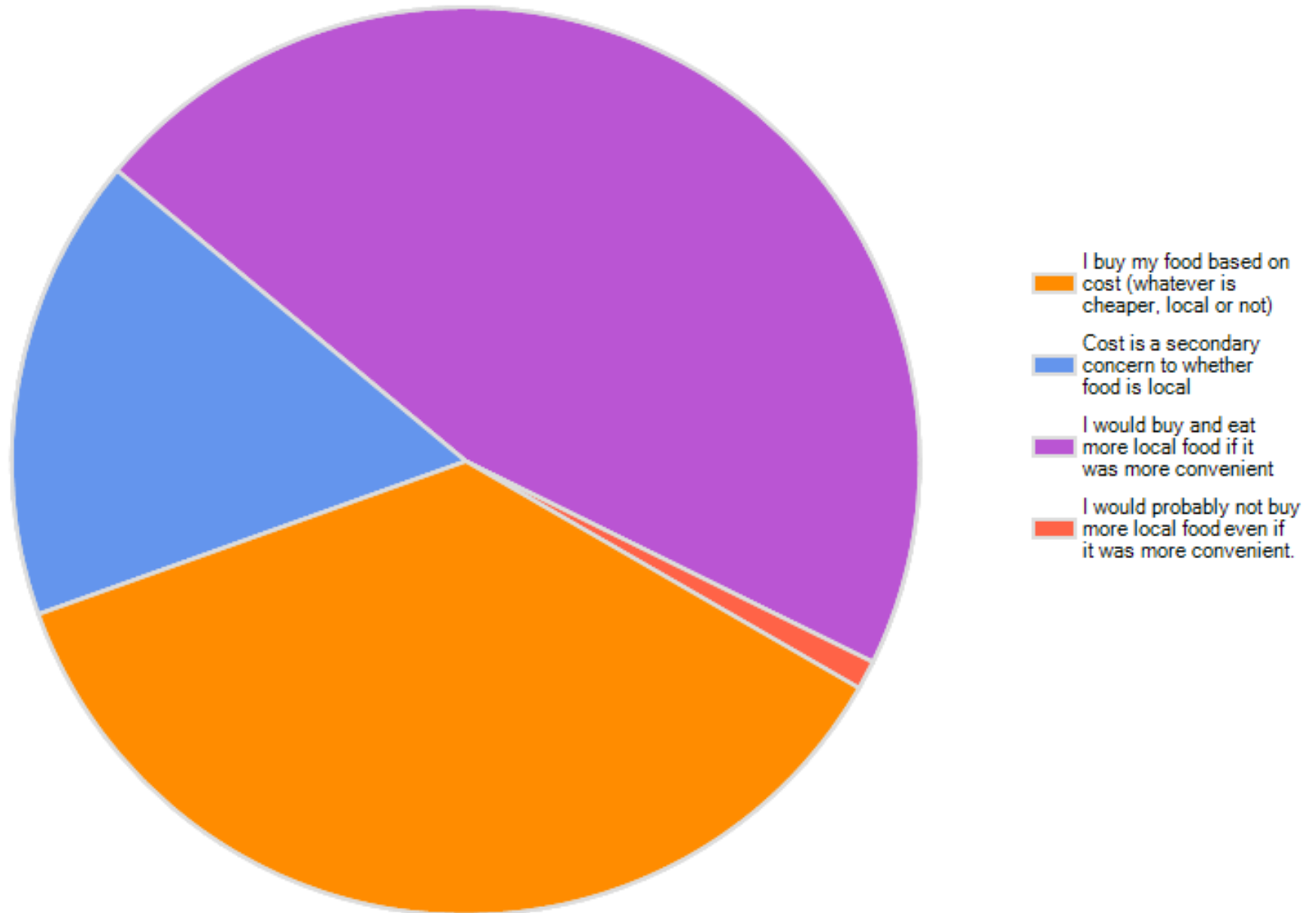
Gathered data from over 400 WWU students  
and faculty



**What is your level of interest in learning about where your food comes from and the environmental impact of how we get our food?**



In concern to buying local food, which statements here do you agree with? Check all that apply.





# What is a CSA box?

- Community Supported Agriculture
- Pre-ordered and pre-paid
- From several local farmers



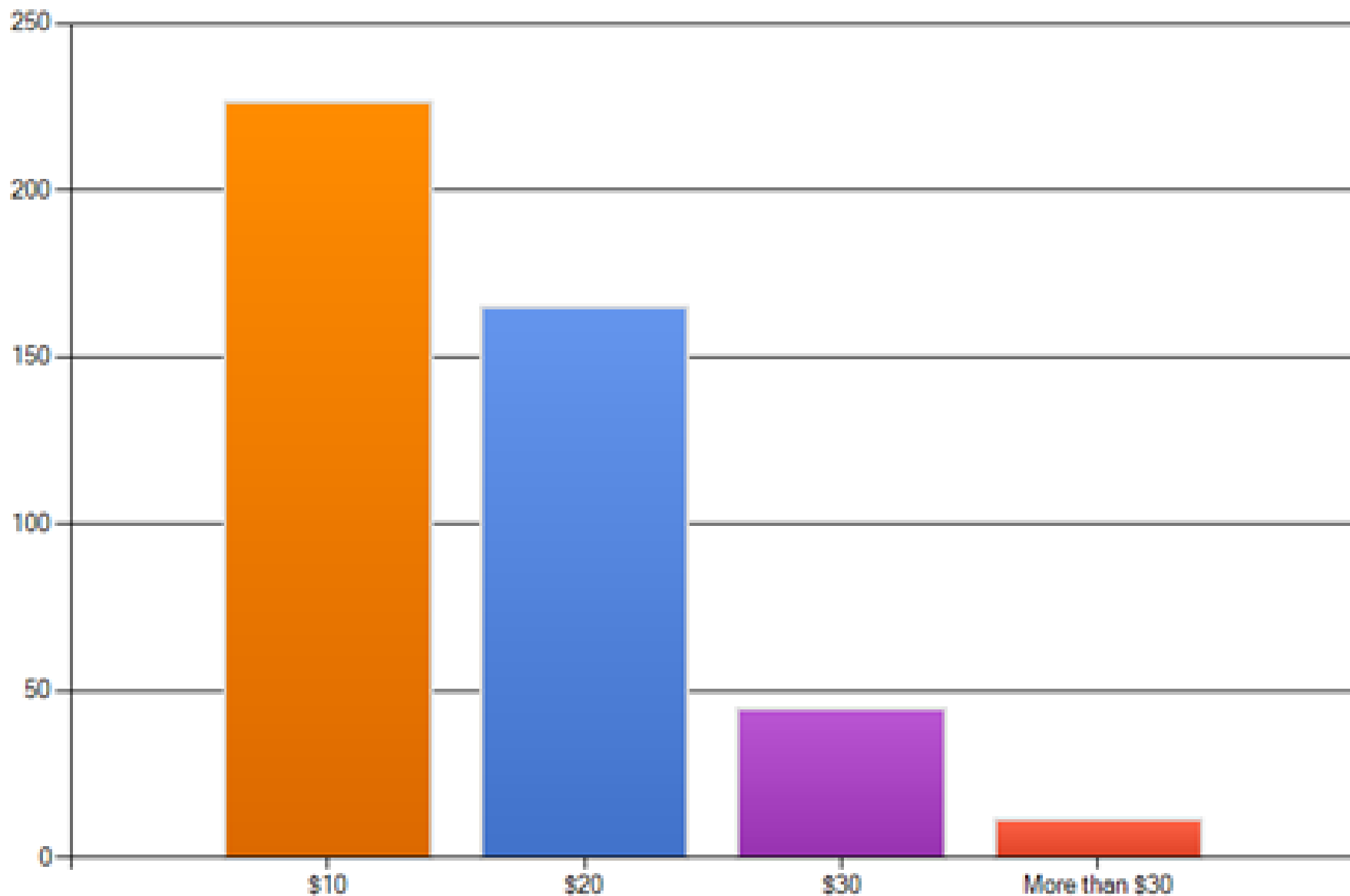
# How will this benefit WWU?

- Supports local farmers
- More access to local foods
- Reducing carbon footprint
- Involved with the community





**If you were offered the opportunity to purchase a CSA box (community supported agriculture) which includes 10-15 locally grown produce items delivered once a week on Western's campus, how much would you be willing to pay?**



# Future Works

Starving Students and Staff CSA box option

~ 25% discount

~ Week  
by week

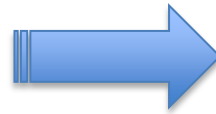
Eventually....

Farmer's  
Market on  
Campus



# Conclusion

- Accessible local food to students and staff of WWU
- Farmer's Market on campus
- CSA Box pick-up site





# WWU CSA Pick-up Site



- Vendor's Row
- Tuesday December 7, 2010
- 12pm to 2pm
- Reserve your CSA box by Friday December 3, 2010
- Contact: Cailen McDevitt (206) 669-1565
- \$20 check made out to Clayton Burrows

# Contacts and Acknowledgments

Gene Meyers  
Professor of Environmental Education at WWU

Caprice Teske  
Director of Bellingham Farmers Market  
(360) 647-2060

Liz Macnear  
Asst. Director Farmers Market at U.C. Davis  
(530) 756-1695

Jim Shuster  
Director of VU Facilities at WWU  
(360) 650-3451

Paul Mueller  
Environmental Risk Manager at WWU  
(360) 650-3065

Gail Feenstra  
Food Systems Coordinator at U.C. Davis  
(503) 752-8408

Tom Kunesh of Whatcom Department of Health  
Food safety program supervisor  
(360) 676-6724 ext. 50832

**Clayton Burrows**  
**Director of Growing Washington**

**(206) 719-0056**

Seth Vidana  
Sustainability Coordinator at WWU  
(360) 650-2491

